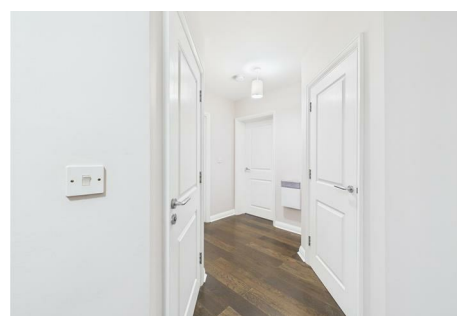


SOLIHULL RESIDENTIAL LETTINGS



41 18 Union Road Solihull, B91 3DH

This immaculately presented furnished apartment is part of a well-regarded development, offering not just a beautiful home but also an ideal location as it lies near the heart of Solihull Town Centre.

It is located just 0.3 miles away and hosts the renowned Touchwood complex offering residents easy access to upscale retail, dining, and entertainment options including a multi-screen cinema theatre and library.

For leisure and outdoor activities, Tudor Grange Leisure Centre and Park is conveniently just 0.9 miles away, providing residents with opportunities for recreation and exercise

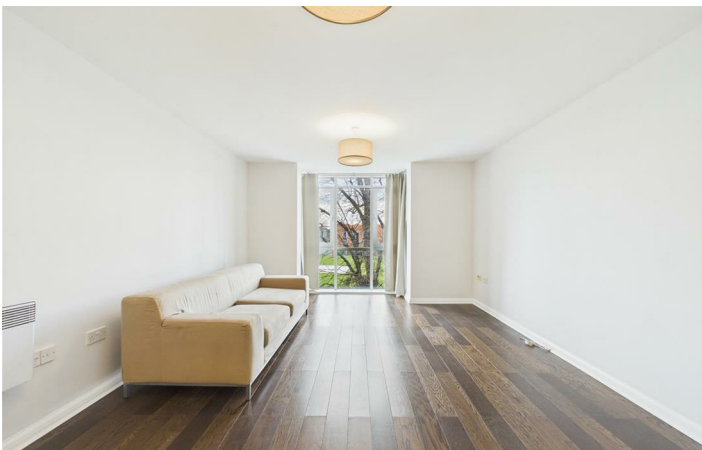
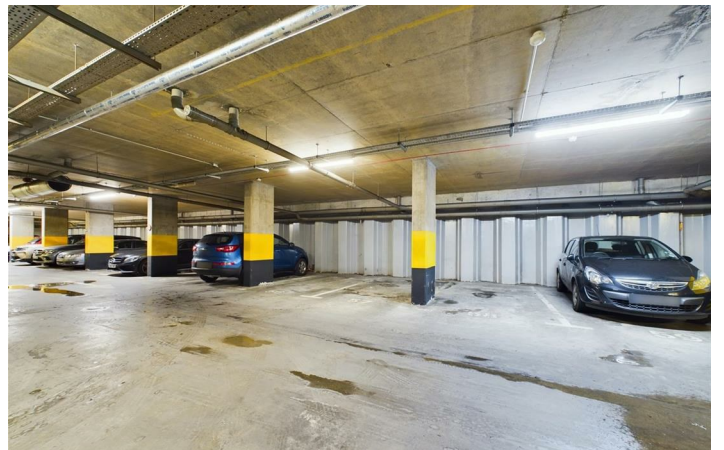
The property is conveniently located just 0.8 miles away from Solihull Railway Station which offers smooth regular connectivity between Birmingham Snow Hill and London Marylebone.

This makes the property an appealing option for individuals seeking convenience and connectivity.

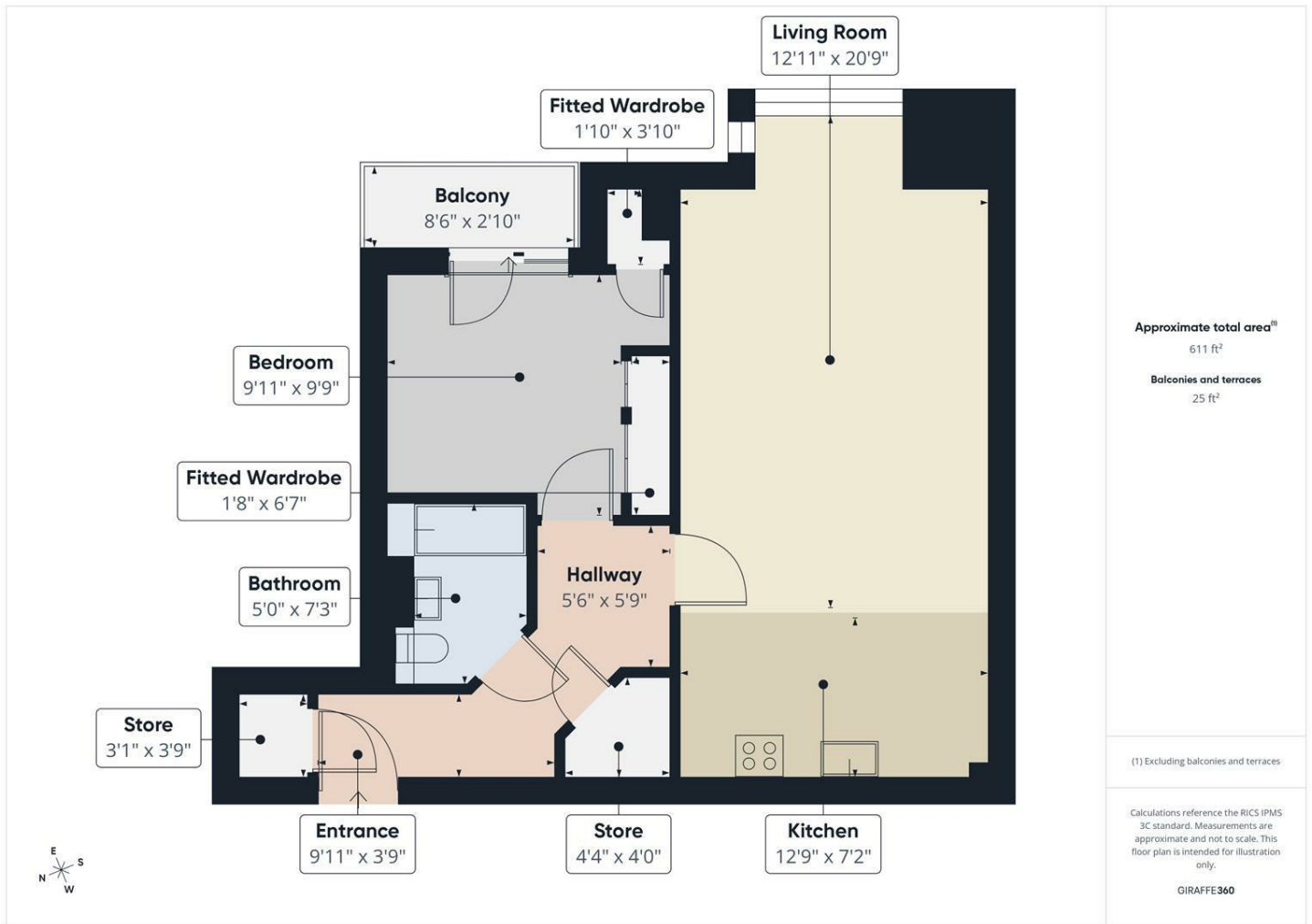
Access the property by passenger lift either from the main foyer or from the underground car park.

£1,195 PCM





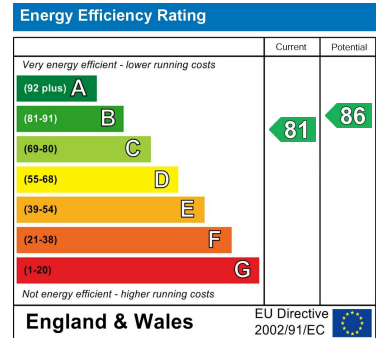
Floor Plan



Area Map



Energy Efficiency Graph



These particulars, whilst believed to be accurate are set out as a general outline only for guidance and do not constitute any part of an offer or contract. Intending purchasers should not rely on them as statements of representation of fact, but must satisfy themselves by inspection or otherwise as to their accuracy. No person in this firm's employment has the authority to make or give any representation or warranty in respect of the property.

Zenith House, Highlands Road, Solihull, B90 4PD

Tel: 01217112222 Email: info@solihullresidential.com www.solihullresidential.com

